

Native Plant Community Screening
East Pond, Smithfield and Oakland, Maine
August 2014

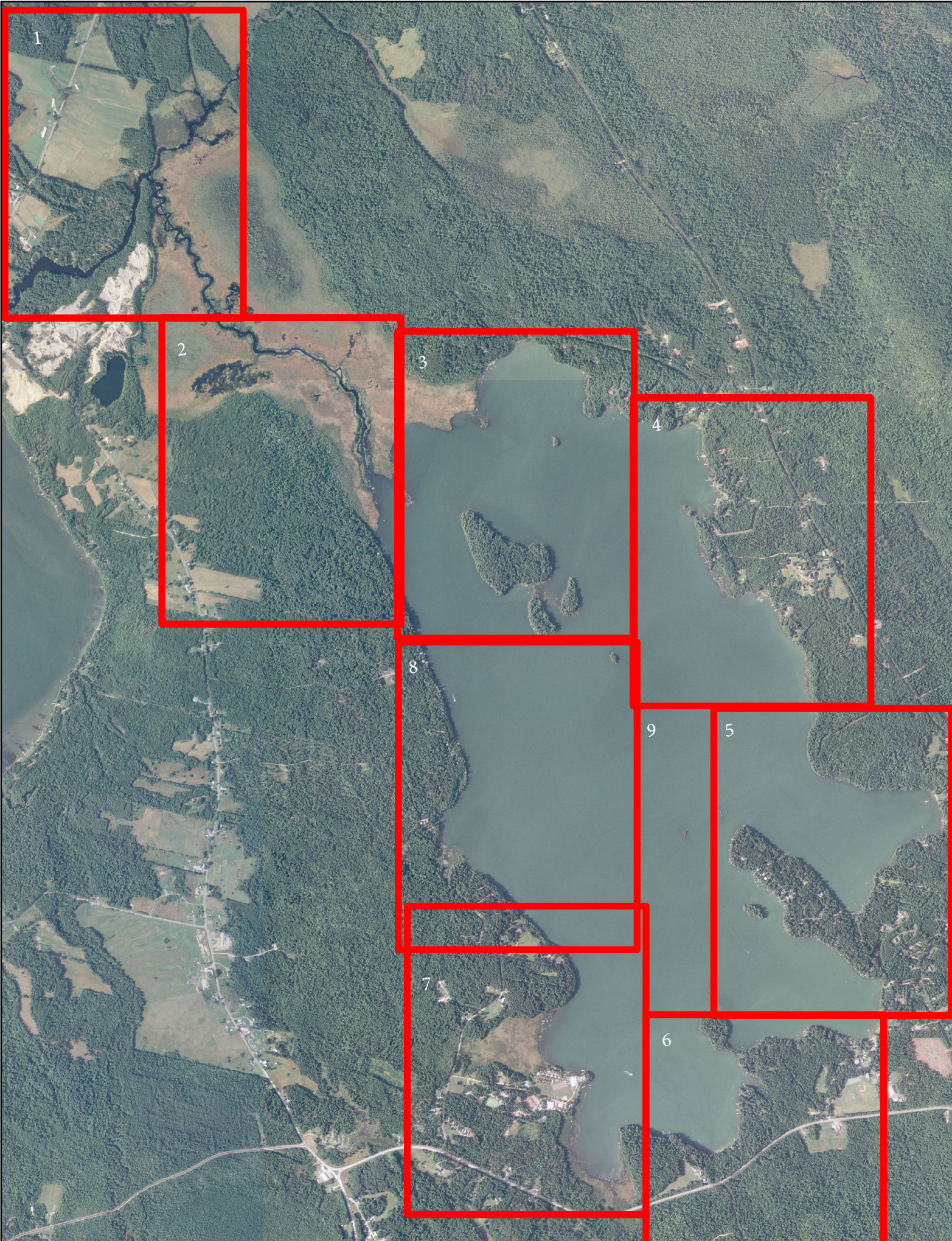
By: Kiana Kawamura & Andrew Newcomb, Colby College



East Pond (MIDAS #5349) is the first lake of seven in the Belgrade Lakes watershed and is surrounded by Smithfield and Oakland, Maine. Entering East Pond by the public boat launch, you see mostly sand and rocks covering the shoreline. Moving toward Libby Point you pass a couple of coves dominated by fragrant water lily with other emergent plants like pickerel weed and bur-reed sprinkled in. The rocky point off the end of Libby Point is home to a variety of pondweed species and bladderwort. The southern shoreline is

mostly rocky and sandy with intermittent patches of very dense pickerel weed, bayonet rush, and fragrant water lily, especially in the southwest corner by the across from Libby Point. Moving north along the west shoreline, very few plants are found in the sandy littoral zone except in the cove directly across from Brickett Point. This cove is home to a dense patch of water marigold along with floating leaf plants such as fragrant water lily and spatterdock. Moving up to the mouth of the Serrentine, the shoreline is still mostly barren with small patches of the same dominant plants found in the southern end of East Pond. As you enter the Serrentine, the littoral zone becomes mucky and dominated by aquatic plants such as bur-reed, pickerel weed, spatterdock, fragrant water lily, northern water milfoil (native) that cover the shoreline. The northwest corner is very similar to the south, with few plants growing with the exception of small patches of bayonet rush, pickerel weed and fragrant water lily. A few species of pondweed can be found in some of the more protected coves along the shore. Continuing south toward Brickett Point and the boat launch, the same is true with scattered patches of plants but mostly rocky shoreline.

While East Pond is mostly rocky and devoid of plants, it is home to a large variety of aquatic plants in the Serrentine and in the sheltered coves that are found around the lake.



Grid Number	Plants found
1	<p> Aquatic moss spp. Common bladderwort Floating leaf bur-reed Coontail Metaphyton Pickerel weed Fern pondweed Floating-leaf pondweed Small pondweed Variable pondweed Spatterdock Fragrant water lily Watermarigold Watershield Common waterweed Wild celery Duckweed Norther water milfoil Waterwort </p>
2	<p> In mouth of Serpentine and lower Serpentine: Floating leaf bur-reed Coontail Metaphyton Pickerel weed Pipewort Fern pondweed Floating-leaf pondweed Small pondweed Variable pondweed Bayonet rush Spatterdock Fragrant water lily Watershield Wild celery Duckweed </p> <p> Bottom of 2 (outside Serpentine): Aquatic moss spp. Floating leaf bur-reed Slender naiad Pickerel weed Fern pondweed Floating-leaf pondweed Small pondweed Variable pondweed Quillwort spp. Bayonet rush </p>

	<p>Spatterdock Fragrant water lily Water marigold Watershield Common waterweed Water starwort</p>
3	<p>Miller Islands: Floating leaf bur-reed Metaphyton Pickerel weed Pipewort Fern pondweed Floating-leaf pondweed Small pondweed Bayonet rush Spatterdock Fragrant water lily Common waterweed Water starwort</p>
4	<p>Bladderwort spp. Floating leaf bur-reed Metaphyton Slender naiad Pickerel weed Pipewort Small pondweed Variable pondweed Quillwort spp. Bayonet rush Spatterdock Fragrant water lily Common waterweed Water starwort</p>
5	<p>Aquatic moss spp. Floating leaf bur-reed Metaphyton Slender naiad Pickerel weed Pipewort Floating-leaf pondweed Small pondweed Quillwort Bayonet rush Fragrant water lily Common waterweed</p>
6	<p>Aquatic moss spp. Common bladderwort Floating leaf bur-reed</p>

	Metaphyton Slender naiad Pickerel weed Pipewort Fern pondweed Variable pondweed Bayonet rush Spatterdock Fragrant water lily Water marigold Common waterweed Wild celery
7	Common bladderwort Floating leaf bur-reed Metaphyton Slender naiad Pickerel weed Pipewort Fern pondweed Floating leaf pondweed Large leaf pondweed Variable pondweed Quillwort spp. Bayonet rush Spatterdock Fragrant water lily Water marigold Watershield Common waterweed Wild celery Water starwort
8	Aquatic moss spp. Floating leaf bur-reed Slender naiad Pickerel weed Fern pondweed Floating-leaf pondweed Small pondweed Variable pondweed Quillwort spp. Bayonet rush Spatterdock Fragrant water lily Water marigold Watershield Common waterweed Water starwort